

interstyle

Interstyle Glass Wall Tiles Installation Guidelines

Overview

Interstyle produces high-quality glass tiles, designed for both interior and exterior applications, capable of withstanding various environmental conditions. These tiles come in thicknesses suitable for mosaic designs, wall installations, and floor applications. Adhering to the specific installation instructions for glass tiles is crucial, as their process differs from that of ceramic or porcelain tiles.

Pre-Installation Advice

Cutting Tiles: Use diamond blades designed for glass to prevent chipping. Montolit wet diamond blades are highly recommended.

Surface Preparation: Ensure the substrate is level and prepared. Apply a crack suppression or waterproof membrane before installation (e.g., Schluter Kerdi or Protecto Wrap AMF).

Installation Do's and Don'ts:

Do not skip the crack suppression membrane. Avoid applying excessive thinset, which can lead to overbuilding.

Smooth out trowel marks from the thinset before laying the tiles.

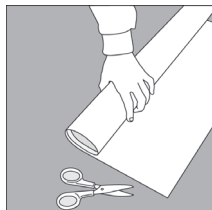
Handling: Glass tiles should not be installed on flexible or uncured substrates or exposed to high abrasion, impacts, or thermal shock.

Substrate Preparation

Crack Isolation Membrane:

Use an ANSI A118.12 certified membrane across the entire surface to prevent potential cracking.

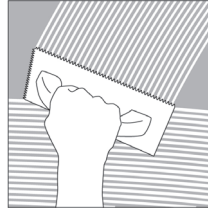
Surface Leveling: Correct any substrate imperfections before applying the membrane. Failure to use a crack isolation membrane absolves the manufacturer



and distributor of responsibility for tile cracking. **Substrate Conditions:** Install tiles only over substrates that are stable and fully cured. Do not use thin-set as a leveling compound.

Installation Process

Tile Verification: Before beginning, confirm the tile color, size, and mounting. Ensure you have enough tiles for the project, accounting for a 15% surplus to cover cutting, breakage, and waste.

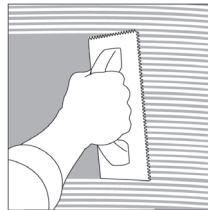


Adhesive and Thinset Selection:

Choose adhesives and thinset that minimize color contrast with the tiles. Consult adhesive manufacturers for products tested for compatibility with glass tiles. For submerged applications, verify the suitability of materials with the manufacturer.

Adhesive Application:

Use a notched trowel as per manufacturer recommendations. Flatten the adhesive ridges to avoid imprinting on the tile. Press tiles firmly to eliminate air gaps.



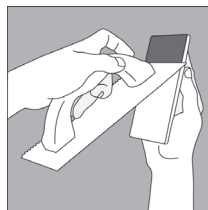
Tile Spacing: Maintain a minimum spacing of 1/16" between tiles using plastic spacers. Follow TCNA guidelines for control joint placement.

Curing and Grouting:

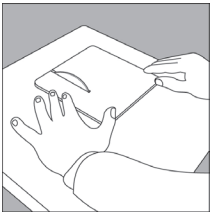
Allow adhesive to cure as per manufacturer's instructions. Select a grout that will not scratch the tile surface, using unsanded grout if necessary.

Cutting Glass Tiles

Tools and Techniques: Utilize tools appropriate for the desired tile cut. For straight cuts, a standard tile cutter may suffice. Use a circular diamond blade for precise cuts without chipping. Ensure the



blade enters the glazed side to minimize chipping and use adequate water to prevent thermal shock.

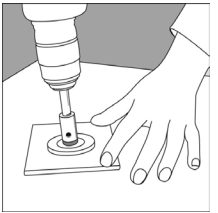


Safety Precautions

Always wear eye protection and rubber gloves. Avoid handling glass by the cut edges. Be cautious of glass movement during cutting to prevent accidents. Wear safety footwear and minimize exposure to silica dust by ensuring a wet cutting environment.

Drilling

Drill Bit Selection: Use bits specifically designed for glass. Apply sufficient cooling water or lubricant during drilling.

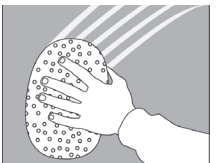


Support: Secure the tile or use a guide when drilling to ensure accurate hole placement.

Special Considerations

Heavy Fixtures: To avoid stress on tiles from heavy fixtures, anchor them securely to the wall structure.

Cleaning: Use non-abrasive cleaners. For tough residues, a baking soda and vinegar mixture can be effective. Rinse thoroughly after cleaning.



Following these guidelines will ensure a successful and durable installation of Interstyle Glass Wall Tiles.



RECOMMENDED INSTALLATION GUIDELINES



interstyle

Interstyle Ceramic & Glass Ltd.
1580 Kingsway Avenue
Port Coquitlam, V3C 3Y9,
BC, Canada,

1-800-667-1566

1-604 421-7229

info@interstyleglass.com

www.interstyleglass.com

©2024 Interstyle Ceramic & Glass Ltd

interstyle