

Interstyle Glass Wall Tiles

Installation Guidelines/ColorFast

Interstyle creates high-quality glass tiles, including the innovative ColorFast product. ColorFast uses a special process where UV cured colors are printed directly onto specially treated glass, offering exceptional color rendition for designs requiring multiple colors beyond traditional silk-screening capabilities. Designed for both interior and exterior use, our glass tiles are suitable for various environmental conditions. However, due to the unique properties of ColorFast, it is not recommended for exterior installations or areas where the tiles will be fully submerged in water, including steam rooms.

Pre-Installation Advices

- Cutting Tiles: for all glass tiles, including ColorFast, use diamond blades specifically designed for glass to prevent chipping. Montolit wet diamond blades are recommended.
- Surface Preparation: ensure the substrate is level and prepared. For ColorFast installations, a Schluter Kerdi membrane is required to ensure optimal adherence and protection. Apply this membrane before proceeding with tile installation.
- Installation Do's and Don'ts: do not skip the crack suppression membrane, particularly Schluter Kerdi for ColorFast tiles. Avoid over-applying thinset to prevent buildup. For ColorFast, use an unmodified thinset and apply a thin coat. Flatten the trowel marks from the notched trowel applicator before laying any glass tiles to prevent them from showing through.

Handling and Installation

ColorFast tiles are resistant to UV light and moisture, but special considerations should be made to protect their vibrant colors and integrity:

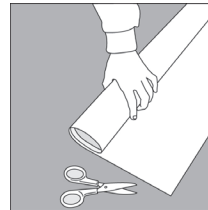
- Avoid Exterior and Submerged Installations: despite their durability, ColorFast tiles should not be installed in exterior locations or where they will

be immersed in water.

- Modified Installation Method: ColorFast requires a specific installation approach using the Schluter Kerdi membrane and an un-modified thinset. This combination ensures that the special treatment of the glass and the printed colors adhere well and are protected over time.

Substrate Preparation

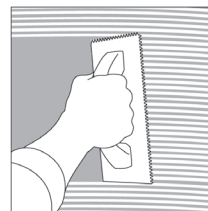
- Crack Isolation Membrane: specifically for ColorFast, apply a Schluter Kerdi membrane across the entire surface. This step is crucial for preventing moisture intrusion and ensuring the substrate's suitability for the unique composition of ColorFast tiles.



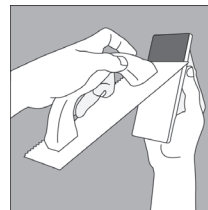
- Surface Leveling: before installing the crack isolation membrane, correct any substrate imperfections. Installation over well-cured, stable substrates is crucial, especially for ColorFast tiles to maintain their aesthetic and structural integrity.

Installation Process

- Adhesive Application: for ColorFast, spread an un-modified thinset using a notched trowel. It's essential to strike down the notches with the flat side of the trowel to ensure a smooth, even layer beneath the tiles. This method is vital for preventing trowel marks from mirroring through the ColorFast tiles.

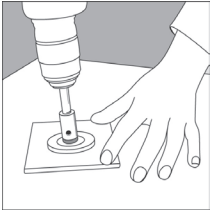


- Tile Spacing and Grouting: Maintain a minimum spacing of 1/16" between tiles. After the adhesive has cured, choose a grout that will not scratch the surface of the tile. Unsanded grout is recommended to preserve the ColorFast finish.



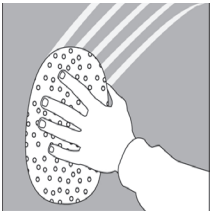
Drilling

- Drill Bit Selection: use bits specifically designed for glass. Apply sufficient cooling water or lubricant during drilling.
- Support: secure the tile or use a guide when drilling to ensure accurate hole placement.



Special Considerations

- Heavy Fixtures: to avoid stress on tiles from heavy fixtures, anchor them securely to the wall structure.
- Cleaning: use non-abrasive cleaners. For tough residues, a baking soda and vinegar mixture can be effective. Rinse thoroughly after cleaning.



Safety Precautions

- Always wear eye protection and rubber gloves.
- Avoid handling glass by the cut edges.
- Be cautious of glass movement during cutting to prevent accidents.
- Wear safety footwear and minimize exposure to silica dust by ensuring a wet cutting environment.

Due to the unique manufacturing process of ColorFast tiles, ensuring the color fidelity and durability of these tiles requires adherence to the specified installation materials and methods. Following these guidelines will help maintain the vibrant, precise colors and longevity of your ColorFast tile installation.

interstyleglass.com/technical/

interstyle

RECOMMENDED INSTALLATION GUIDELINES



©2025
Interstyle Ceramic & Glass Ltd
1580 Kingsway Avenue
Port Coquitlam, V3C 3Y9,
BC, Canada.

+1 800 667 1566
+1 604 421 7279
info@interstyleglass.com
interstyleglass.com

interstyle